

New wireless telemetry port

More robust USB port connector

Extra status LED

Measure Vcc here

New diode

New fuse

Power port

New style GPS port

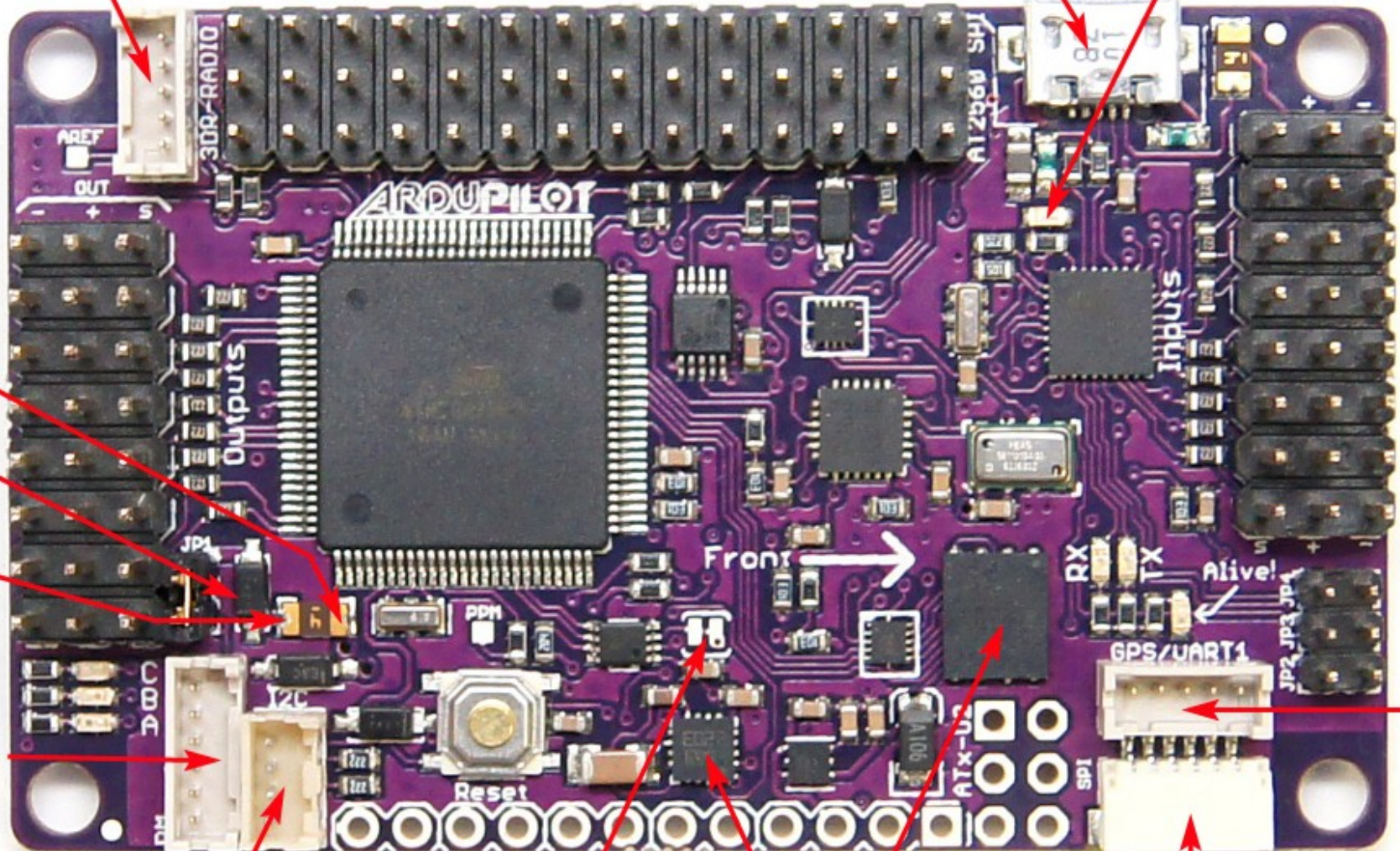
New External I2C port

Optional to use external magnetometer

On board Mag

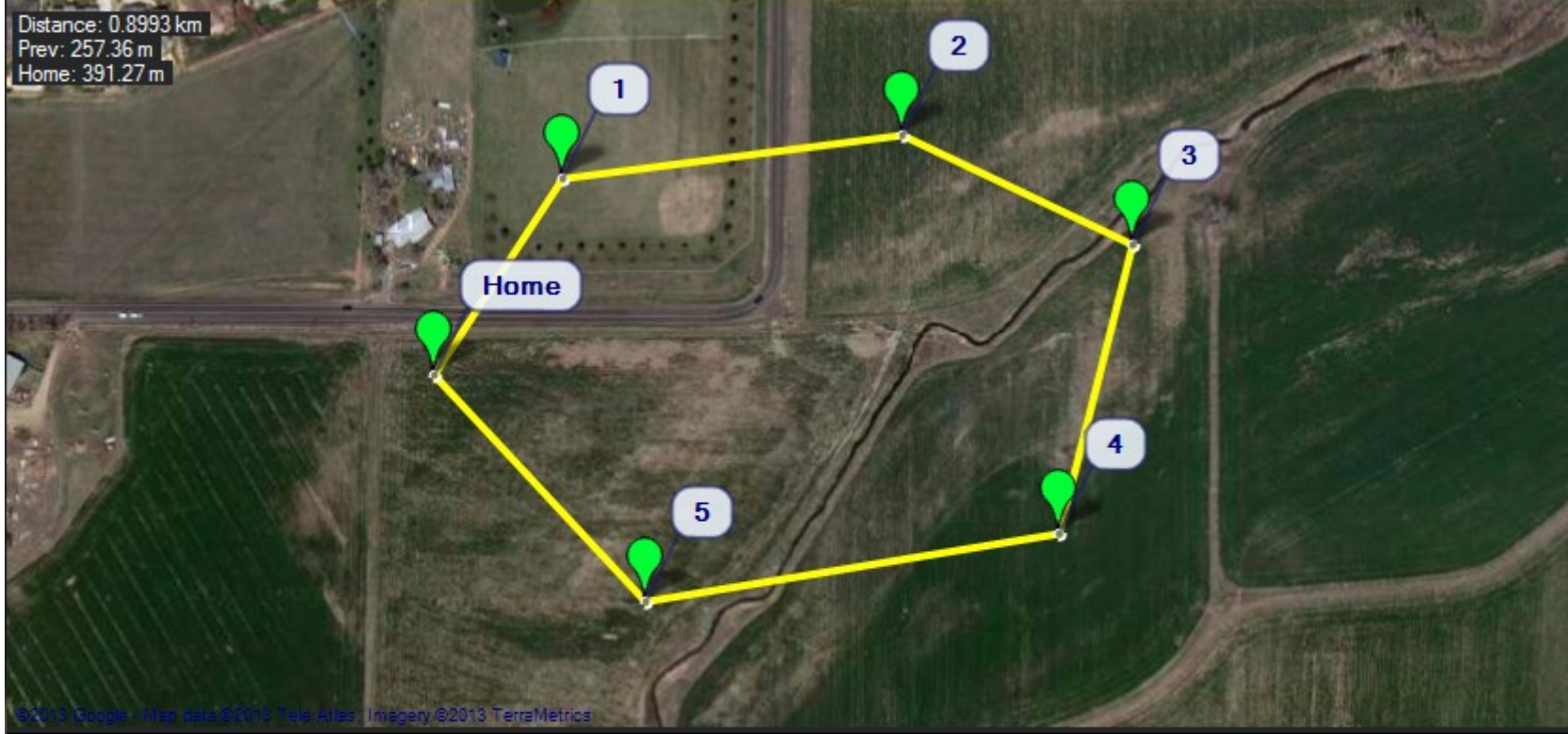
Dataflash

Old style GPS port





Flight Data
Flight Planner
Configuration
Simulation
Firmware
Terminal
Help
COM50
115200
Connect



Zoom

Action >>

Mouse Location

Lat 40.12887660
Long -105.1075208
Alt 1525

GoogleSatellite

Status: loaded tiles

Read WPs

Write WPs

Home Location

Lat 40.13040239
Long -105.1116621
Alt (abs) 20

Waypoints

WP Radius
 Loiter Radius
 Default Alt
 Hold default Alt
 Verify Height
 Add Below

	Command	Delay	Hit Rad	Yaw Ang	Lat	Long	Alt	Delete	Up	Down
1	WAYPOINT	0	0	0	40.1312555	-105.1109326	100	X	🏠	📍
2	WAYPOINT	0	0	0	40.1314442	-105.1090014	100	X	🏠	📍
3	WAYPOINT	0	0	0	40.1309684	-105.1076925	100	X	🏠	📍
▶ 4	WAYPOINT	0	0	0	40.1297133	-105.1081109	100	X	🏠	📍
5	WAYPOINT	0	0	0	40.1294180	-105.1104605	100	X	🏠	📍

Flight Data Flight Planner Configuration Simulation Firmware Terminal Help

ArduPlane COM30 115200 Connect

ArduPlane V2.32

ArduCopter V2.5.3 Quad

ArduCopter V2.5.3 Hexa X

ArduCopter V2.5.3 Octa V

ArduCopter V2.5.3 Hel (2560 only)

ArduCopter V2.5.3 Tri

ArduCopter V2.5.3 Y6

ArduCopter V2.5.3 Octa X

! **Hi!** SIMULATOR PLANE QUAD HELI

APM Setup (Plane and Quad)

Status Images by Max Levine

- Diydrones.com
- Conservationsdrones.com

- Hobbyking.com
-